

ASTM E399 Fracture Toughness Clevis Grip Fixture | GE399-353

Overview

ASTM E399 Fracture Toughness Clevis Grips are designed for static and dynamic testing of compact tension specimen in accordance with relevant ASTM standard practices. The fracture toughness tests such as K_{Ic} , J_{Ic} and CTOD can be conducted using these clevises in accordance with ASTM E399, E647 and E1820.

To meet the test requirements for specimens of varying width and thickness, a series of clevis grips with varying sizes are available. Standard grips are rated from 0 °C to 100 °C (32°F to 212°F) for low temperature and elevated temperature applications. Models are available that will accommodate temperature ranges from -70 °C to 1000 °C (-94°F to 1832°F).

Features

- Rugged
- Compatible with a broad temperature range
- Compatible per ASTM E399, E647 and E1820
- Adapters available for all brands of test machines
- Available in many sizes



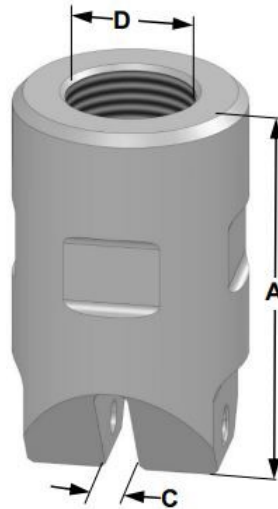
Specifications

Model	Specimen Width	Pin Diameter	Specimen Thickness
Application for Room temperature to 100 °C (212°F)			
GB5-201	25.4 mm (1 in)	6.3 mm (0.248 in)	6.35 mm (0.25 in)
GB5-202	25.4 mm (1 in)	6.3 mm (0.248 in)	12.5 mm (0.49 in)
GB5-203	50.8 mm (2 in)	12.7 mm (0.5 in)	12.5 mm (0.49 in)
GB5-204	50.8 mm (2 in)	12.7 mm (0.5 in)	25.4 mm (1 in)
Application temperature range up to 1000 °C (1832°F)			
GB5-251	25.4 mm (1 in)	6.3 mm (0.248 in)	6.35 mm (0.25 in)
GB5-252	25.4 mm (1 in)	6.3 mm (0.248 in)	12.5 mm (0.49 in)
GB5-253	50.8 mm (2 in)	12.7 mm (0.5 in)	12.5 mm (0.49 in)
GB5-254	50.8 mm (2 in)	12.7 mm (0.5 in)	25.4 mm (1 in)
GB5-2xx	Made per specifications		

Dimensions

Model	A	C	D (Stud Size)
Application for Room temperature to 100 °C (212°F)			
GB5-201	100 mm (3.94 in)	6.6 mm (0.26 in)	M27X2*
GB5-202	100 mm (3.94 in)	13.2 mm (0.52 in)	M27X2*
GB5-203	100 mm (3.94 in)	13.2 mm (0.52 in)	M27X2*
GB5-204	100 mm (3.94 in)	26 mm (1.02 in)	M27X2*
Application temperature range up to 1000 °C (1832°F)			
GB5-251	100 mm (3.94 in)	6.6 mm (0.26 in)	M27X2*
GB5-252	62.5 mm (2.46 in)	13.2 mm (0.52 in)	M27X2*
GB5-253	62.5 mm (2.46 in)	13.2 mm (0.52 in)	M27X2*
GB5-254	82 mm (3.23 in)	26 mm (1.02 in)	M27X2*
GB5-2xx		Made per specifications	

**Other sizes are available*



Contact an application engineer to configure a solution to your application requirements.