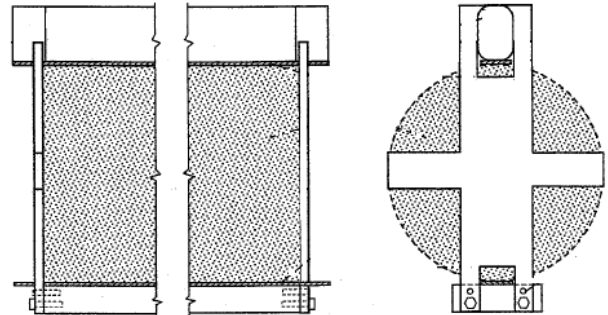


GC496 Compression Fixture for Cylindrical Concrete Meets ASTM C496

This fixture is specifically designed for determining the split strength of cylindrical concrete following the test practices of ASTM C496. Grips are to be used with a test machine that meets the requirements of ASTM C39.

The fixture is required to have a bearing plate that transmits the load from the test machine to the test specimen. ASTM defines specific tolerances for the bearing plate. The bearing plate is mounted with a jig that holds the concrete test specimen and the loading plate. (American Society for Testing and Materials [ASTM], 2004)

Bearing strips should also be used to prevent damage between the loading plate and the test specimen.



ASTM Sketch

Reference ASTM Standard C496, 2004, "Standard Test Method for Splitting Strength of Cylindrical Concrete Specimens," Drawing is copyright ASTM International, West Conshohocken, PA, 2007, www.astm.org.